

Appendix C

Bridge Openings and Rail Crossing Information

Bridge Opening Statutes

33 Code of Federal Regulation (CFR) Part 117.5

Stipulates when the draw shall open-

... draw bridges shall open promptly and fully for the passage of vessels when a request to open is given in accordance with this subpart.

... If at least one hour notice is given by marine radio, telephone or other suitable means to the Washington State Department of Transportation...

For example, subpart 117.1031 states Chehalis River Bridge shall open on signal from one hour before sunrise and one hour after sunset EXCEPT: from 7:15 a.m. to 8:15 a.m. and 4:15 p.m. to 5:15 p.m...

Bridge Locations

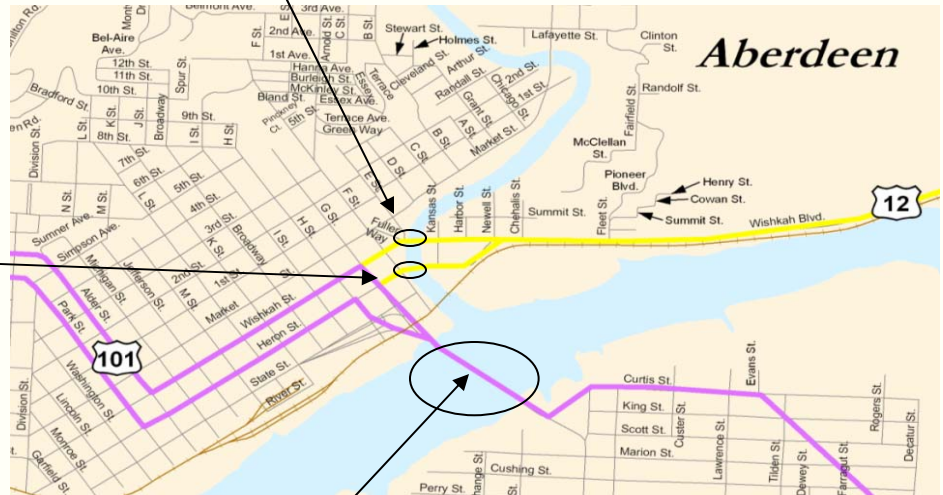
Hoquiam River (Riverside Ave) Bridge



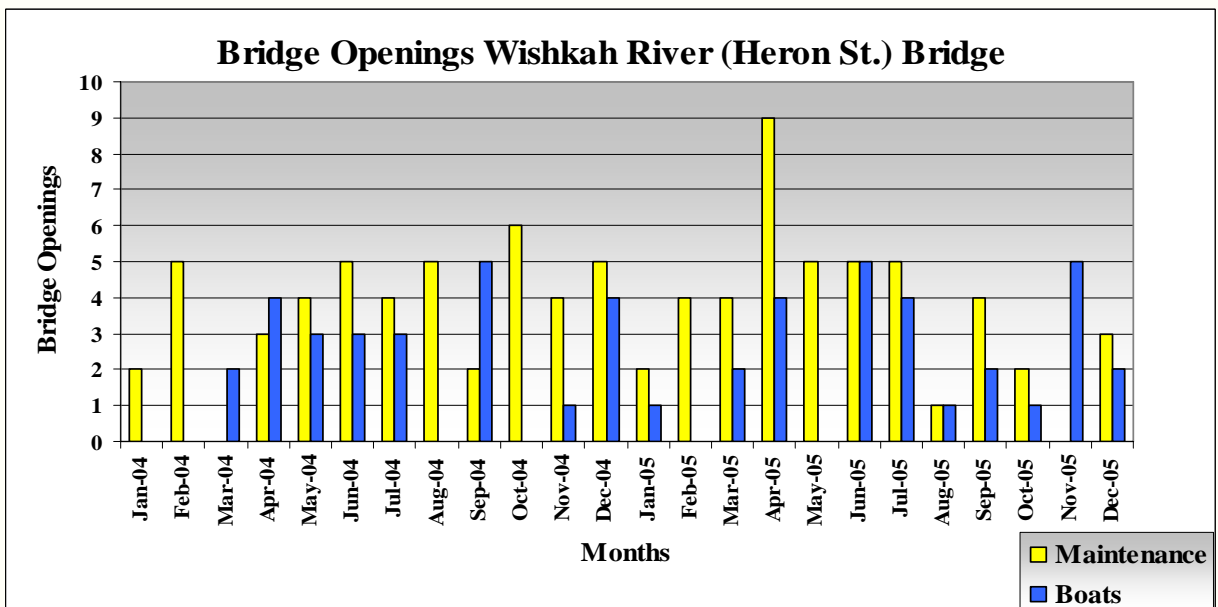
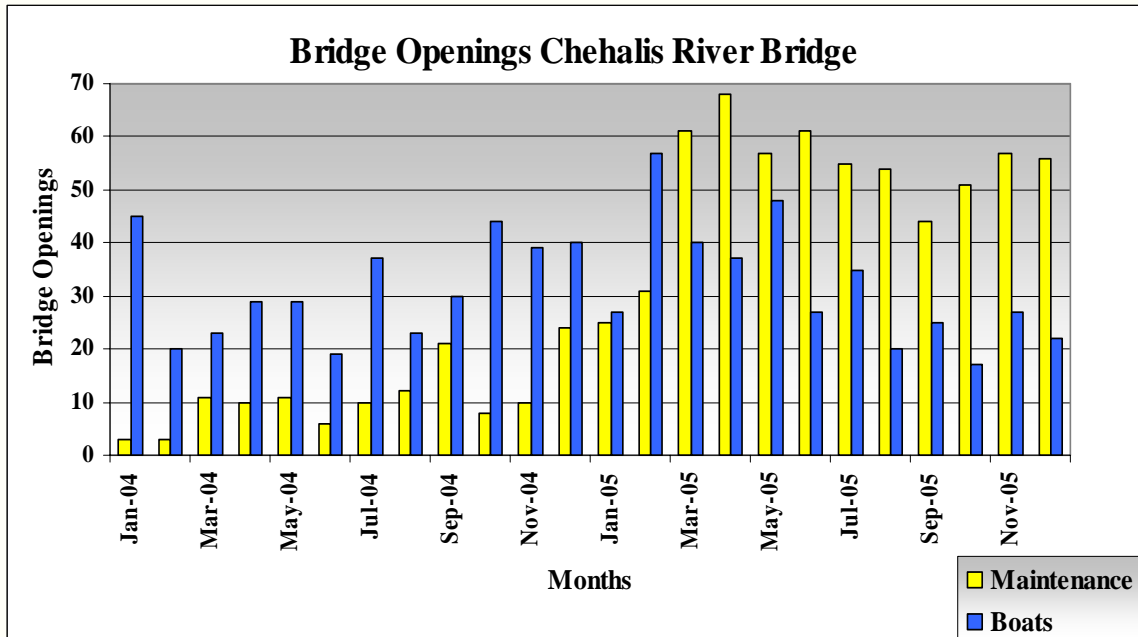
Hoquiam River (Simpson Ave) Bridge

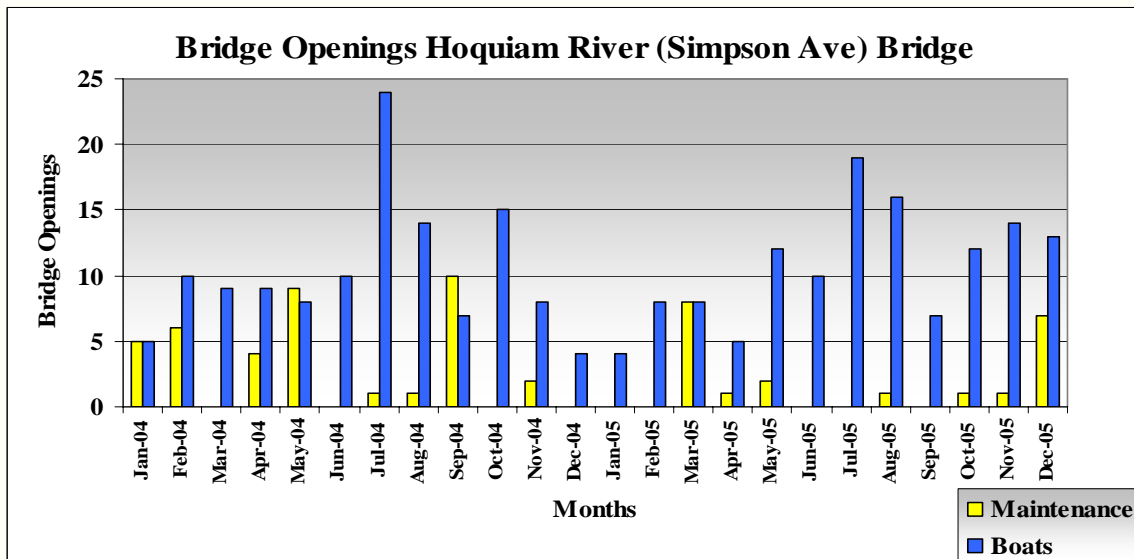
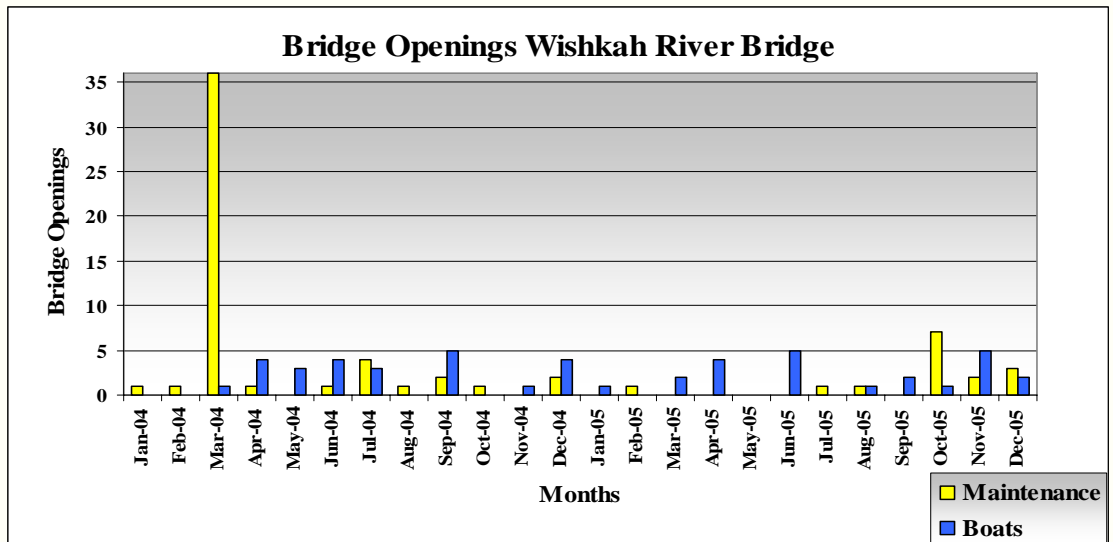
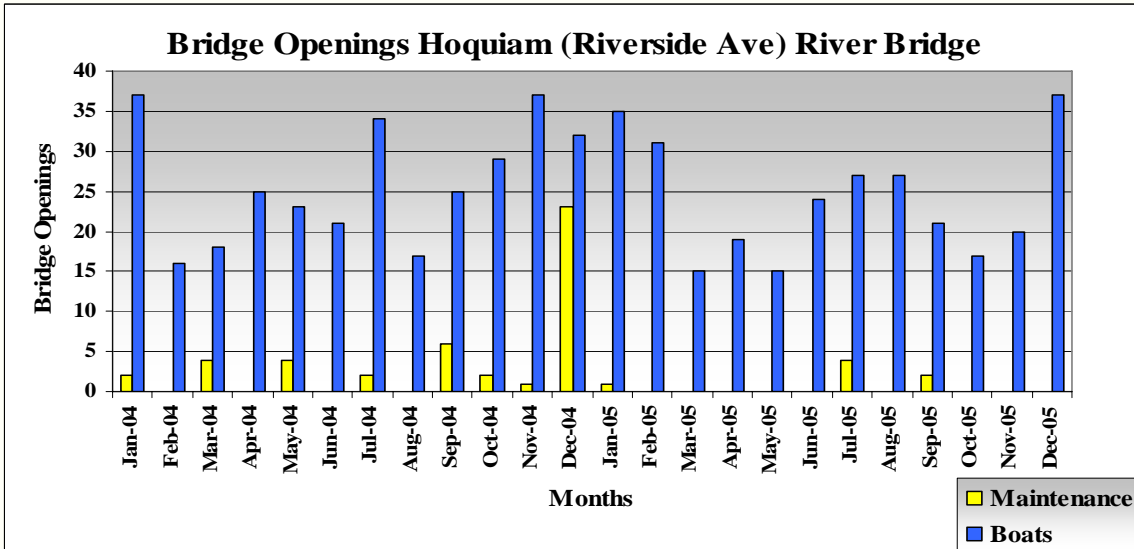
Wishkah River Bridge

Wishkah River (Heron St) Bridge



Chehalis River Bridge





Bridge Openings

Summary Table							
			Chehalis River Bridge	Wishkah River (Heron St) Bridge	Hoquiam River (Simpson Ave) Bridge	Hoquiam River (Riverside Ave) Bridge	Wishkah River Bridge
	Year Built		1955	1949	1928 Rebuilt: 1948	1970	1925 Rebuilt: 2003
Boat	Avg. # of Openings per month	2004	32	2	10	26	2
		2005	32	2	11	24	2
Maintenance	Avg. # of Openings per month	2004	11	4	3	4	4
		2005	52	4	2	1	1
	Avg. Duration of Openings	2004	10 min.	10 min.	6 min.	7 min.	7 min.
		2005	6 min.	9 min.	6 min.	7 min.	8 min.

Source: WSDOT Aberdeen Bridge Office

Rail Basic Statistics

The Port has easy access to rail with connections to BNSF and UPRR near Centralia through services of Puget Sound & Pacific (PS&P) Railroad

Number of trains per day (over a 24 hour period)	3
Speed of train in Port Area	10 mph
Number of days service provided in a week	6 days
The typical PS&P Grays Harbor train consists of	25-50 cars

Existing Railcar Storage

- The majority of railcar storage is at the PS&P's Aberdeen yard
- Aberdeen Yard is comprised of 12 tracks totaling 10,000 feet
- The longest track is 2200 ft. long and can hold 36 sixty-foot railcars
- PS&P has other minor storage tracks through the area

Vessel Loading Capacity

Year	Vessel Calls	Capacity (metric tons / vessel)	Railcars
2005	33	15,909	308
2025	46	25,000	500

Source: Port Industrial Road Strategic Analysis

Future Railcar Storage



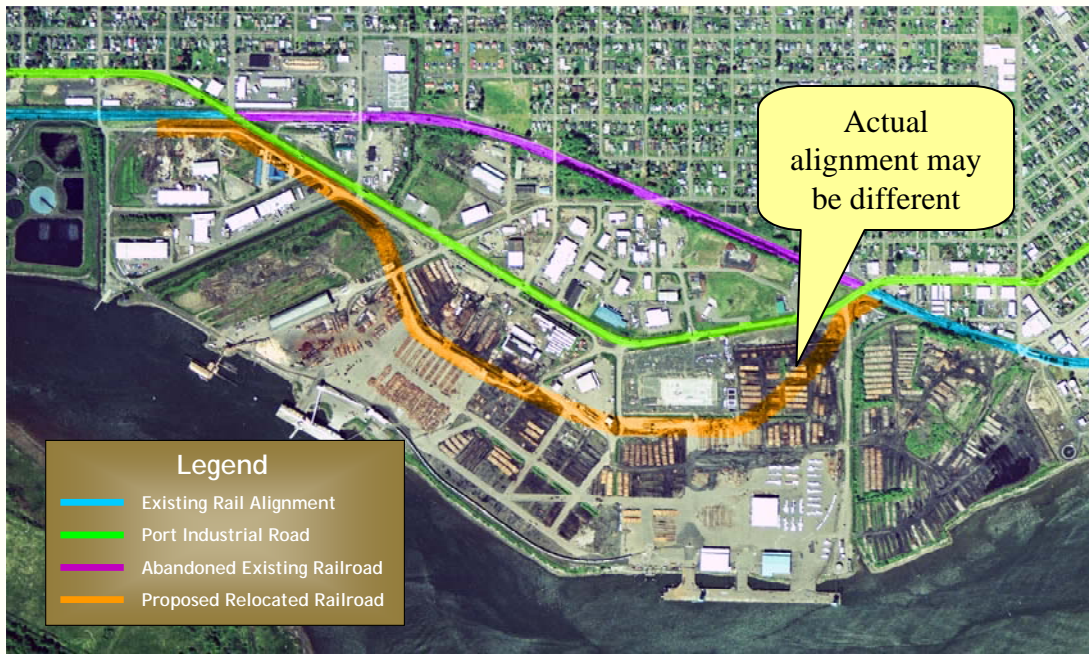
www.PortofGraysHarbor.org

This map is for illustrative purposes only. Storage yard locations have not been identified. Further study is needed.

Local Street Blockage

- Blockage comes from switching & building trains at PS&P Aberdeen Yard
- Without changes to the existing rail infrastructure the local street blockage will continue to increase congestion
- Total cumulative road blockage for arrival/departure to the Port is expected to increase 32% between 2005 and 2025
- Possible solutions: new storage tracks, relocating existing rail line, etc.

Rail Realignment Improvement



Port Industrial Strategic Analysis

ITS: Intelligent Transportation System



Port Industrial Strategic Analysis