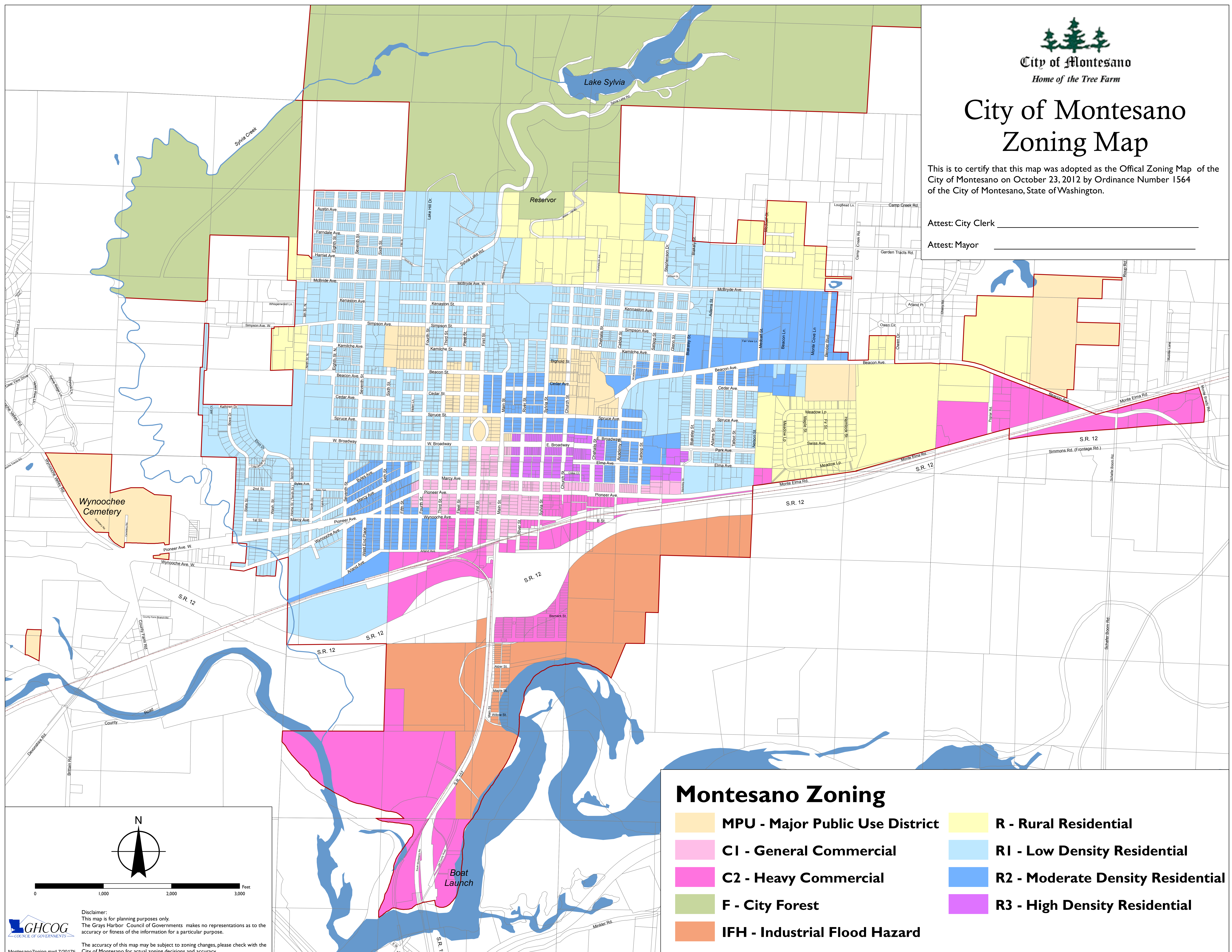


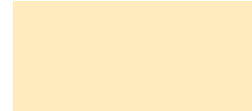
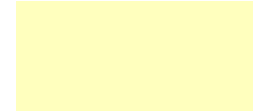

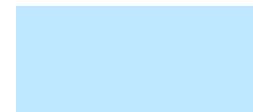





City of Montesano Zoning Map

This is to certify that this map was adopted as the Official Zoning Map of the City of Montesano on October 23, 2012 by Ordinance Number 1564 of the City of Montesano, State of Washington.

Attest: City Clerk _____
Attest: Mayor _____



Montesano Zoning

- | | |
|---|---|
|  MPU - Major Public Use District |  R - Rural Residential |
|  CI - General Commercial |  RI - Low Density Residential |
|  C2 - Heavy Commercial |  R2 - Moderate Density Residential |
|  F - City Forest |  R3 - High Density Residential |
|  IFH - Industrial Flood Hazard | |

Disclaimer:
This map is for planning purposes only. The Grays Harbor Council of Governments makes no representations as to the accuracy or fitness of the information for a particular purpose.

The accuracy of this map may be subject to zoning changes, please check with the City of Montesano for actual zoning decisions and accuracy.

MontesanoZoning.mxd 7/2017

